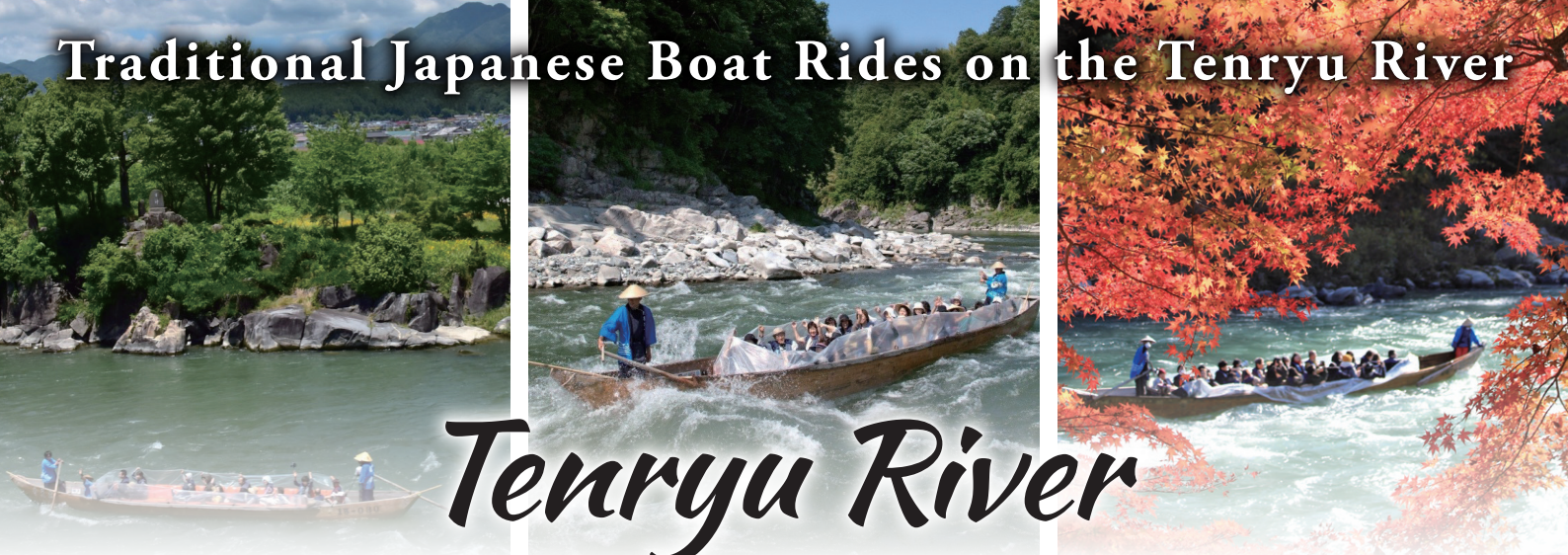


Traditional Japanese Boat Rides on the Tenryu River



Tenryu River Wasen Kudari



Hop aboard and splash your way down the rapids of the Tenryu River in an ancient Japanese river boat known as a *wasen*.

Tenryu River Boat Ride Flow

Time Required: 1hour 30minutes

Culture & History



Wasen (Japanese boat) building techniques go back 450 years and have been passed down through generations. As well as learning about the rhythmic nail hammering techniques, you will also be able to feel the weight of a wasen oar in your hands.

Shuttle Bus

Tokimata Dock~Benten Dock



Take a free shuttle bus from Tokimata Dock to the boarding point at Benten Dock (approx. 20 mins).

Boat Ride

Benten Dock~Tokimata Dock

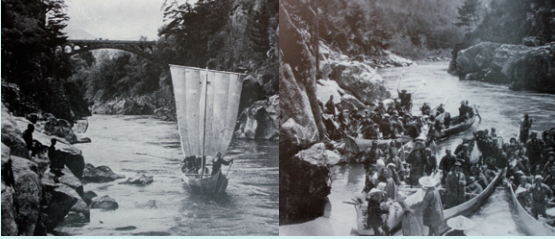


Now it's time to ride down the Tenryu River on a traditional Japanese boat. Enjoy the rapids and the skills of the Japanese boatmen.

Tenryu River Boat Ride Plan

Culture & History

Tenryu River Boating History



River transport on the Tenryu River dates all the way back to the Tokugawa Shogunate (1603-1868).

Japanese Boat Building Techniques



Using techniques passed down through generations, boat nails are rhythmically hammered in a unique way.

Japanese Boat Driving Techniques



Applying ancient methods where one paddle controls a 12m boat, the skilled drivers steer with expert precision.

Boat Ride

Garyukyo Gorge

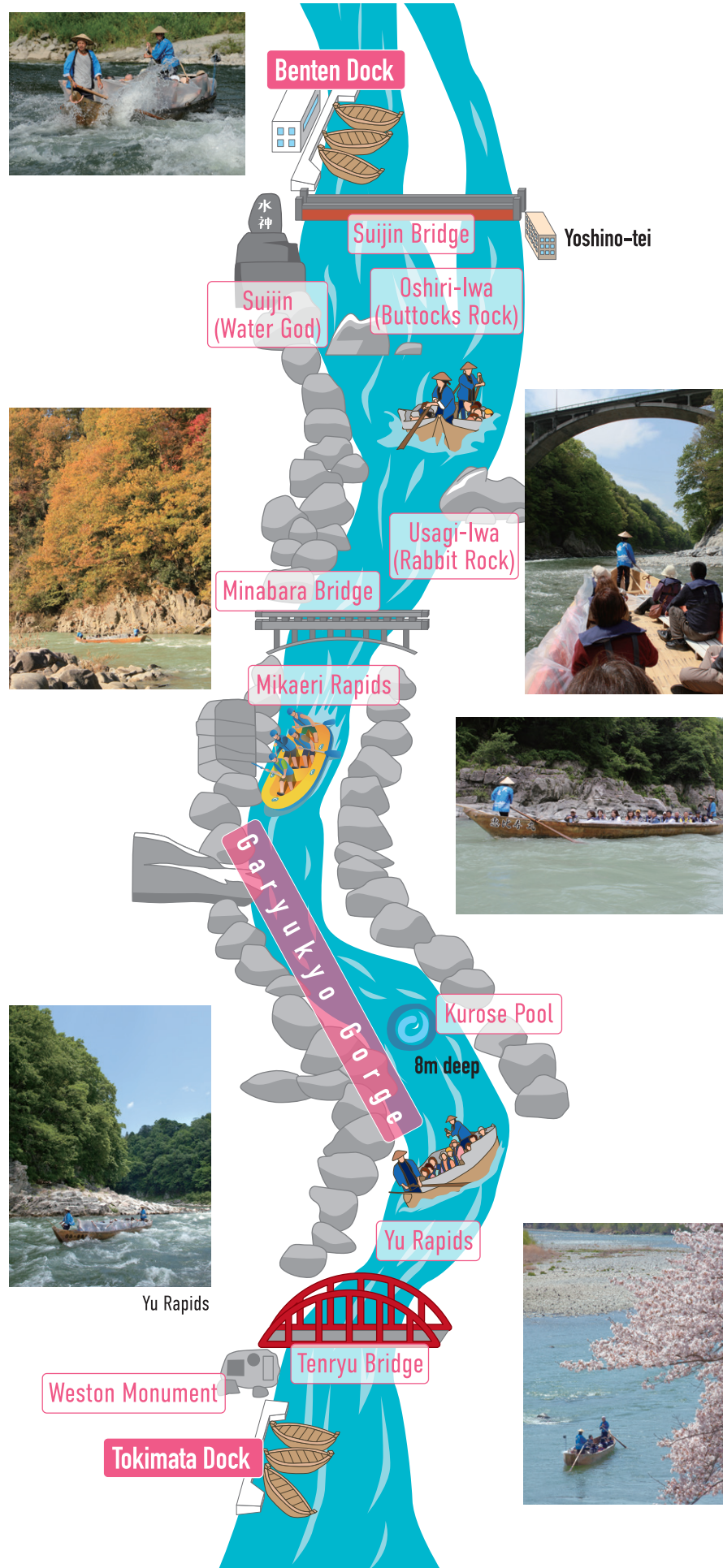


Enjoy an exhilarating boat ride through a series of rapids.

While riding the boat please wear the self-inflating life jackets provided. When they enter the water they will automatically inflate.



Tenryu River Boat Ride Map



Booking

<https://mr-tenryu.com/>



Scan the QR code for bookings.

Please make bookings using the Minami Shinshu Resort homepage.

Getting Here

Google Search

For those arriving by car, search for "Tokimata Dock". For those arriving by public transport, Tokimata Dock is a 7 minute walk from Tokimata Station on the JR Iida Line.

Meeting Point & Time Schedule

Meeting Point

Tokimata Dock
(free parking available)

Time Schedule

2 Boats Per Day

9:50 13:50

4 Boats Per Day

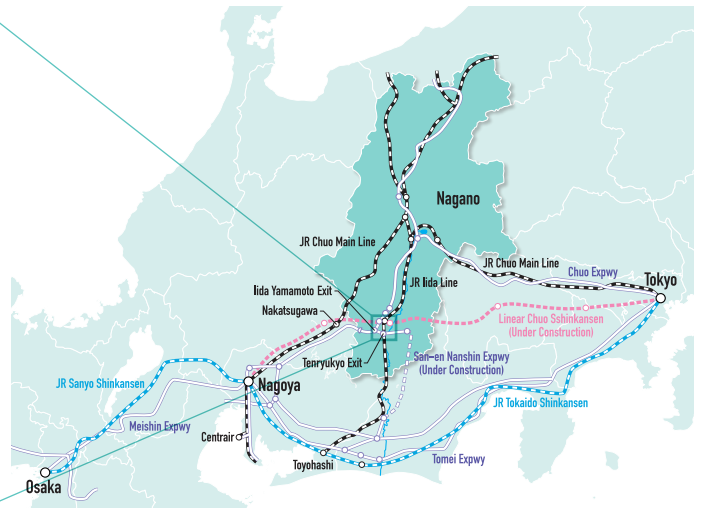
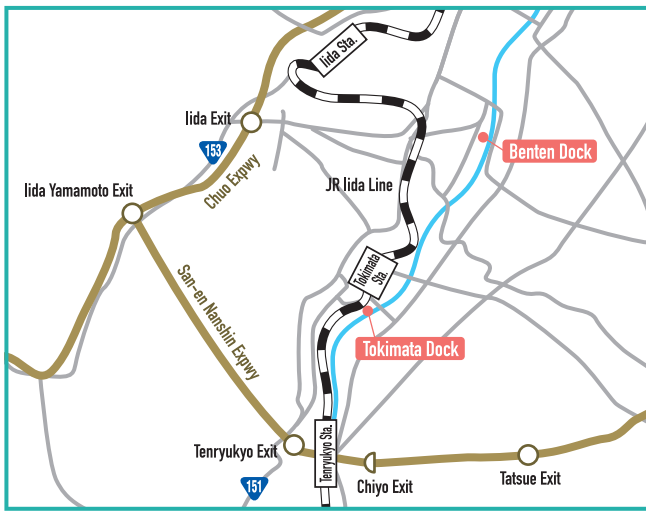
9:30 10:50 12:50 14:10

The time schedule changes according to the season.
For up to date info please check the homepage.

Prices

	Regular Prices	Group Prices (more than 10)
Adult (High school age +)	¥3,300	¥3,000
Children (Elementary school age)	¥1,650	¥1,500
Young kids	¥1,000	¥900
Private Boat Charter (Up to 24 people)	¥72,000	

Access



Car

Tokyo	Chuo Expwy 258km / 3hrs 15mins	Iida Exit	7.4km / 15mins	Tokimata Dock
Osaka	Meishin Expwy / Tomei Expwy / Chuo Expwy 264km / 3hrs 24mins	Iida Yamamoto Exit	San-en Nanshin Expwy 8km / 16mins	
Nagoya	Tomei Expwy / Chuo Expwy 98km / 1hr 16mins	Tenryukyo Exit	3.7km / 8mins	

Train

Shinjuku Sta.	JR Limited Express Azusa 2hrs 20mins	Okaya Sta.	JR Iida Line 2hrs 50mins	Tokimata Dock
Nagoya Sta.	JR Tokaido-Sanyo Shinkansen 20mins	Toyohashi Sta.	JR Iida Line 4mins	
Shin-Osaka Sta.	JR Tokaido-Sanyo Shinkansen 1hr 42mins	Tenryukyo Sta.	JR Iida Line 20mins	
Shinagawa Sta.	JR Tokaido Shinkansen 1hr 27mins	Nagoya Sta.	1min walk	
		Meitetsu Bus Center Nagoya	Nagoya to Iida (by Bus) 1hr 54mins	
		Iida Sta.	5min walk	

Highway Bus

BUSTA Shinjuku	Shinjuku to Iida 4hrs 15mins	Iida Sta.	JR Iida Line 20mins	Tokimata Sta.	5min walk	Tokimata Dock
Meitetsu Bus Center Nagoya	Nagoya to Iida 1hr 54mins					
Osaka	Osaka to Minowa 3hrs 42mins	Kami Iida	20min walk			

Contact / Reservations



MINAMI SHINSHU
RESORT

〒399-2563, Tokimata 1019, Iida City, Nagano Prefecture
TEL: 0265-49-0075 FAX: 0265-49-3976 MAIL: info@mr-tenryu.com

